

Welcome to the NCAP Newsletter - Winter 2015, which aims to keep our subscribers informed of new releases and upcoming projects here at NCAP.

NEWS

Operation MARKET GARDEN



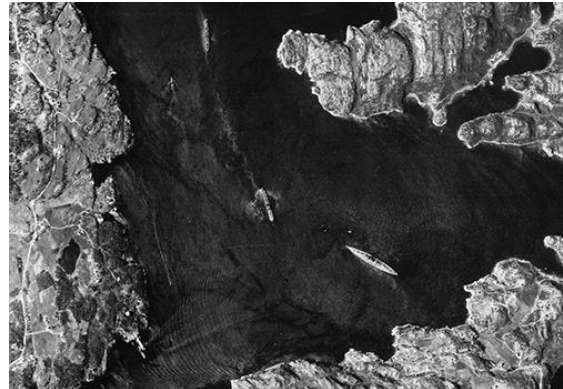
Low-level oblique aerial photographs of the Arnhem and Nijmegen bridges have been released on the NCAP website. Taken by PR Spitfires of 542 Squadron, the images were taken almost two weeks before Operation MARKET GARDEN, the Allied airborne assault on key bridges in the Netherlands during the Second World War.

Bismarck Sortie released

All 146 aerial photographs taken during one of the key reconnaissance missions of the Second World War are now accessible on the NCAP website. Photographs taken during sortie N/0183 to Norway on 21 May 1941 led

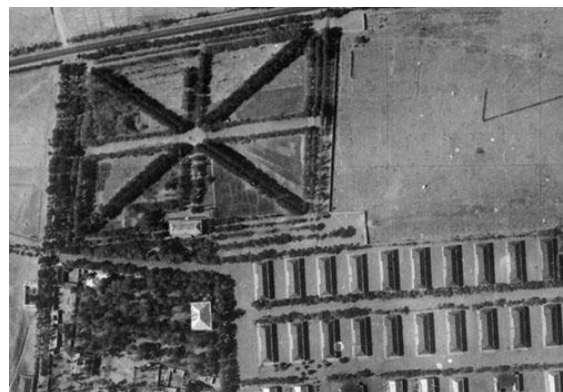
NEWSLETTER – WINTER 2015

to the discovery, and eventual sinking, of the German battleship *Bismarck*.



During this sortie, the 20-year old pilot, Michael Suckling, also photographed the cruiser Prinz Eugen, refuelling to the north-west of Bergen, before personally delivering his photographs to British headquarters in London.

Aerial Images of Tehran released



An aerial survey of Tehran has been digitised and uploaded to the NCAP website. Flown by the Royal Air Force in October 1942, the imagery records the British presence in the Iranian capital during the Second World War.

Images of UK locations released

Aerial images of the [Isle of Wight](#), [West Midlands](#) and [London](#) have been digitised and released on the NCAP website.



photographs, have been digitised and uploaded to the NCAP website.

Flown in 1965 and 1979, the images offer complete aerial cover of the largest two Channel Islands.

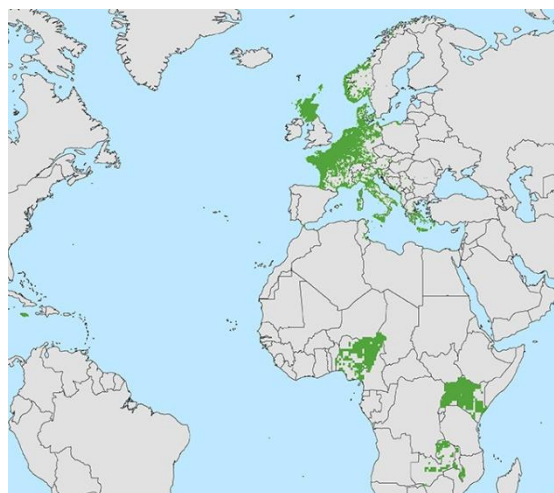


Project ROBIN



Aerial images taken during secret Cold War reconnaissance missions are now accessible on the NCAP website. Now declassified, over 1,270 of these images, taken during a late-1950's project code-named ROBIN, have been digitised and released. The images cover locations in the former East Germany, Egypt and Syria.

Finding Aids released



A further 934 finding aids were uploaded to the NCAP website, where over 2,199,000 not yet digitised aerial photographs are now searchable with a [Zoomable Images & Finding Aids](#) subscription.

Images of Jersey and Guernsey released

Aerial surveys of Jersey and Guernsey, amounting to over 400 vertical aerial

NEW GALLERY

[London 1959 and 2002](#) – a selection of aerial photographs of locations across London, taken in 1959 and 2002.